

GARAGE DOORS



About the company

RIPO International Ltd. was founded in 1993 and was developed from a small office into a sound enterprise with € 8m turnover a year and more than 100 employees. RIPO International is well known as a producer and retailer of various building materials in the Latvian market for almost 15 years. RIPO International produces high quality overhead garage doors for residential and industrial use, as well as sliding gates, roller shutters, insect screens, sand slate for roof covering etc. The Company is also known as a distributor of IKO roofing materials and DERYCK decorative brick tiles. RIPO International is one of the largest and experienced residential and industrial garage doorproducer and installer in Latvia. Amongst our customers are the International Riga Airport, Aviation Base of the Latvian Border Guard, various logistic canters, car dealer centers, retail chain stores etc.



Residential garage doors

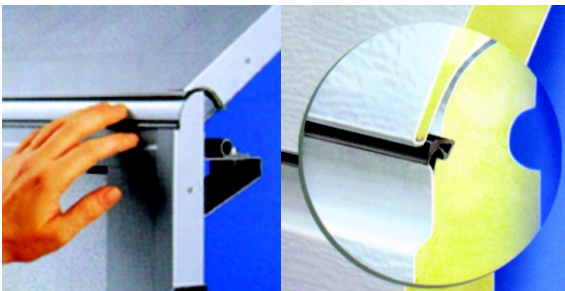


The residential overhead garage door is door, the use of which is not connected with a professional application or commercial activities. The intensity of usage cannot exceed 20 cycles per day. The maximum dimensions of the garage door cannot exceed 6000 mm in width, 2500mm in height. The overhead sectional garage door are primarily considered as a manually operated door using a handle. The gate can be opened automatically by equipping it with an electric operator. (See "Additional equipment".)

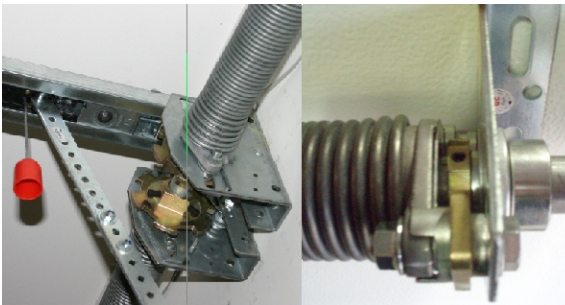
Garage door ensure:

- A good heat insulation, which is ensured by 40mm thick pannels filled with polyurethane,
- It does not electrify and is protected from the weather condition influences and corrosion,
- The rubber seal machined in the panel junctures ensures excellent thermal insulation of the connections,
- Panel material provides an opportunity to paint them in any choice of color tone ,
- Operation does not require large expenses and the gates are easily maintained.

Security equipment

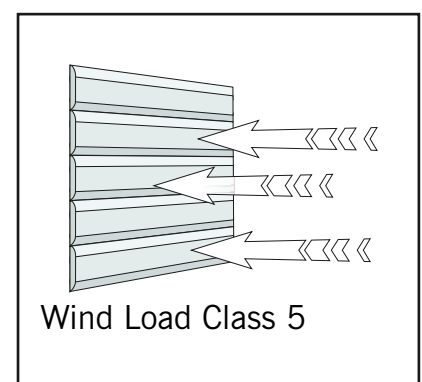
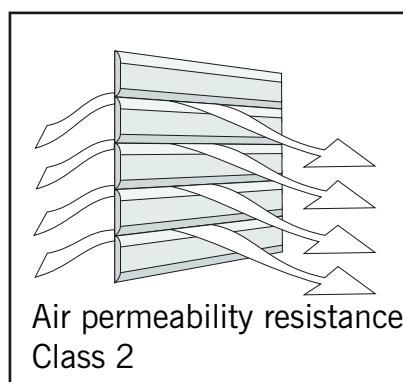
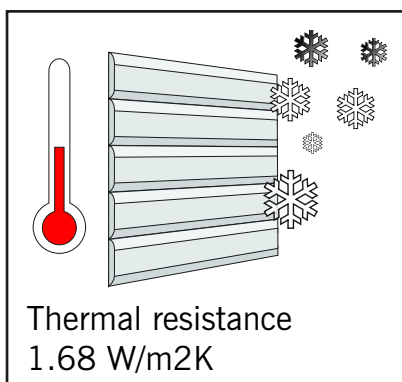


Protection from fingers being squeezed between the panels, which is ensured by an articulate construction of the panel connections.



Protection from falling in case of the spring breaking

According to the standard for the influence of the atmosphere on the overhaead garage doors:



Panel type

- “Ribbed”- An imitation of horizontal boards with a wooden pattern
- “Squared” - An imitation moulded panel type door with a wooden pattern
- “Glassed” Packages of organic glass in an aluminum profile casing.



RIBBED



SQUARED



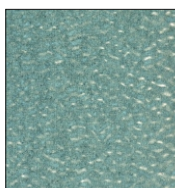
GLASSED



The possible colors



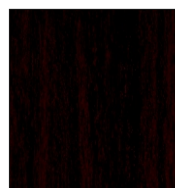
WHITE



SILVER



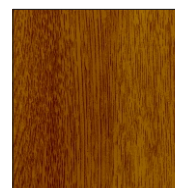
BROWN



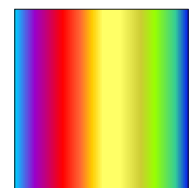
MAHAGONY



ANCIENT OAK



GOLDEN OAK



RAL TONES

Additional equipment

- A rectangular window with an organic glass package buildable into the door section.
- An oval window with an organic glass package buildable into the door section.
- An aperture for ventilation with an adjustable airflow buildable into the door section.
- Door lock - the gate is equipped with one if no automatics are planned. Provides locking of the door both from the inside and from the outside.



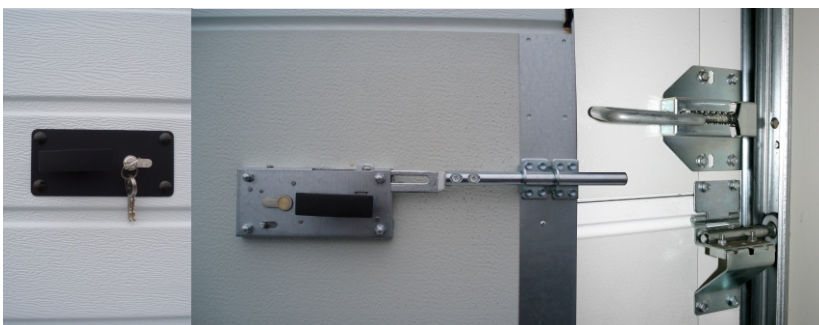
FULLY GLAZED ALUMINIUM SECTION



AN ORGANIC GLASS WINDOW PACKAGE OF A RECTANGULAR OR AN OVAL TYPE BUILDABLE INTO THE DOOR SECTION



APERTURE FOR VENTILATION



DOOR LOCK FROM THE INSIDE AND THE OUTSIDE

Electric operators

Any garage door can be equipped with a door opening/closing operator, which is operated with a remote control, thus, providing an opportunity to open the gates without getting out of the car, which is very useful during bad weather conditions.

The garage door operators are applied according to the door dimensions in a balance with the operator power (500N; 700N; 1000N)

- It is equipped with the end points electronic control
- Adjustable garage ventilation state
- The load change identification for user safety
- Careful movement at the end and the beginning of the door path
- Upon closing and opening of the gate, operator choose the optimal operation power by itself
- Ensures protection against the door opening from the outside
- The automatic closing system, in assemblage with the photo elements
- The equipment for the door opening from the inside in the case of the electricity outage
- The garage lighting with a time relay, built into the casing of the automatics.



PHOTO ELEMENT



ELECTRIC OPERATORS

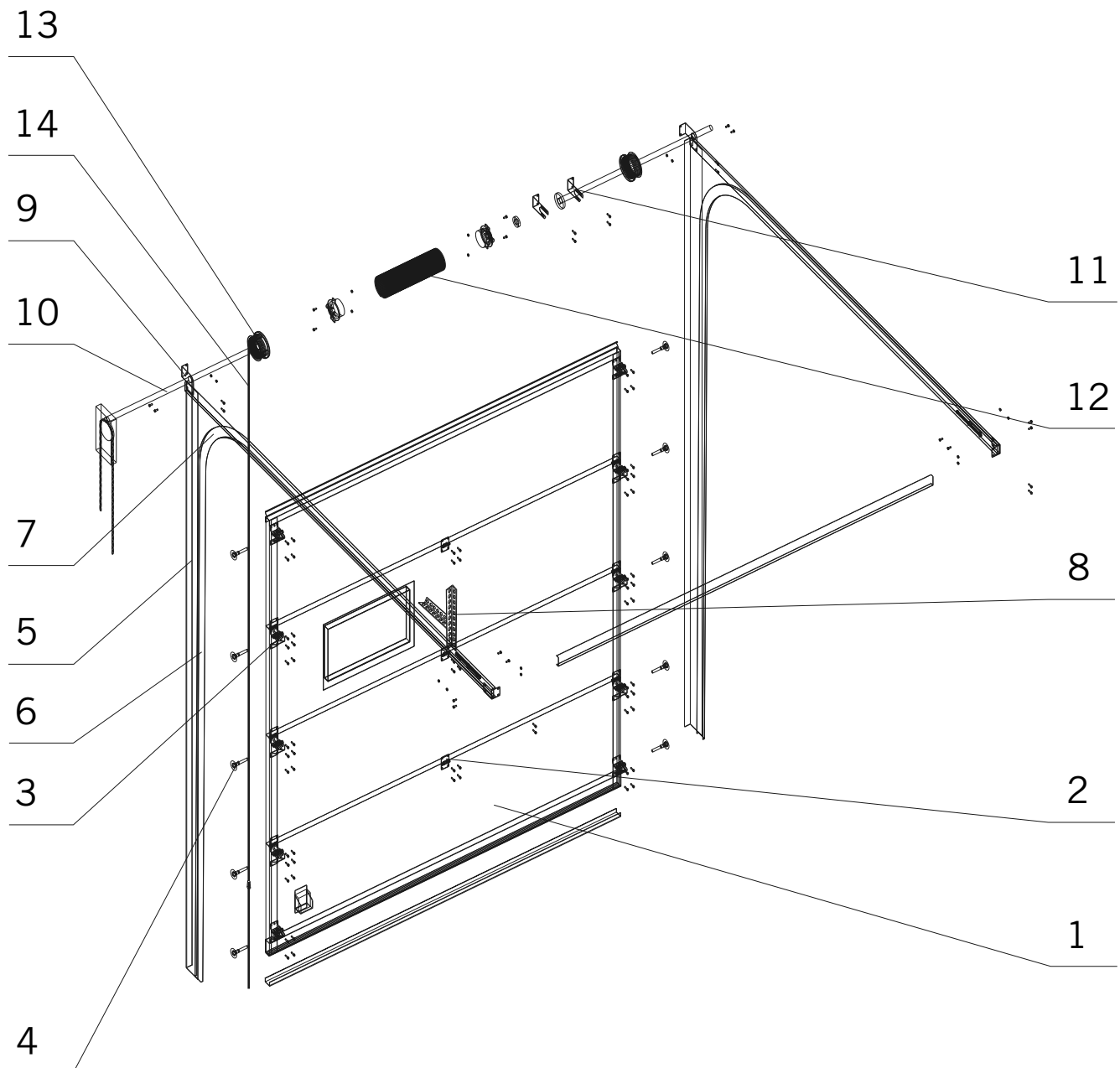


REMOTE CONTROL

- A photo element - identifies an obstacle in the way of door opening and prevents the door from closing. This equipment allows setting an automatic closing function of the door.
- An emergency key - door opening equipment from the outside in the case of electricity outages if the garage has no other entrance.
- A signal lamp - For garage door movement identification
- A code key - permits the use of the door to persons with an access code.
- A wall switch - permits the use of the door from the inside of the garage.

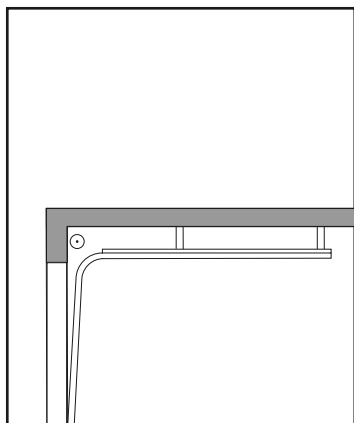
Technical information

A door consists of (see drawing No..1) panels (1.), which are connected together by the middle hinges (2.) and the ending hinges (3.) with the rollers (4.). Wall angles (5.) with the verticals tracks (6.) are secured to the wall. The horizontal tracks with the radiuses (7.) are secured to the ceiling with the hangers (8.) Easy operation of the gates is provided by the lifting mechanism, which consists of bearing plates (9.), a spring bar (10.), center plates (11.), torsion springs (12.), cable drums (13.) and cables (14.). The door are sealed along the whole perimeter of the plane.

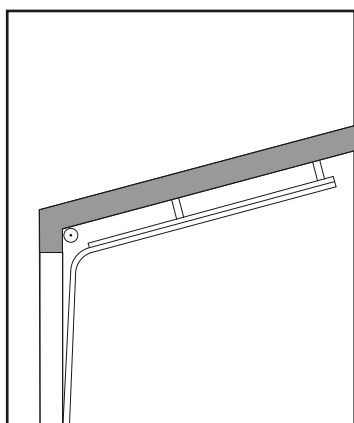


The door are being equipped in accordance with the door opening dimensions and the height from bottom of the opening to the ceiling. This height determines the type of the gate lifting system.

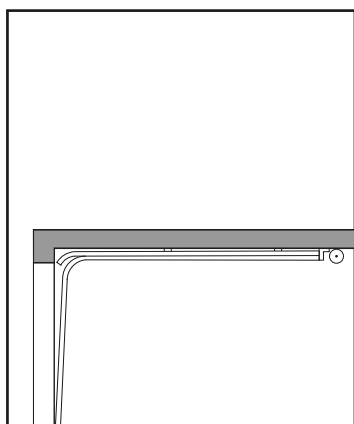
Lifting systems



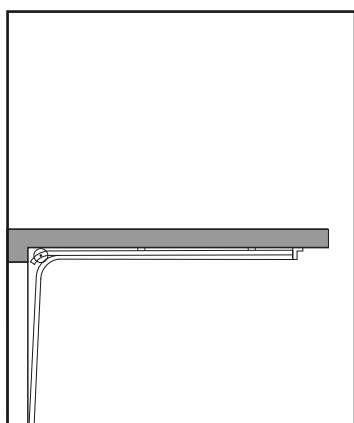
STANDARD LIFT (ST) The standard lifting are used in the spaces, in which the distance from top of the opening to the ceiling is within the range of 380mm to 510mm.



STANDARD INCLINED LIFT. The standard lifting are used in the spaces, in which the distance from top of the opening to the ceiling is within the range of 380mm to 510mm, but part of the ceiling is with a rise.



LOWERED LIFT with a spring block at the end. Installed in the spaces, in which the distance from top of the opening to the ceiling is within the range of 180mm to 230mm.



LOWERED LIFT with a spring block above the door plane. Installed in the spaces, in which the distance from top of the opening to the ceiling is within the range of 230mm to 380mm.

